

# SETTING UP FILEZILLA FTP SERVER

## 1. Description

The File Transfer Protocol (FTP) is a standard network protocol used for the transfer of computer files between a client and server on a computer network.

### Software

FTP is implemented through a software that is installed on a PC and creates on it an FTP server as a working service.

We recommend using Windows tools of FileZilla software.

## 2. An example of setting up an FTP server on Windows using FileZilla

Install the software from <https://filezilla-project.org>  
(FileZilla Server)

There are two options:

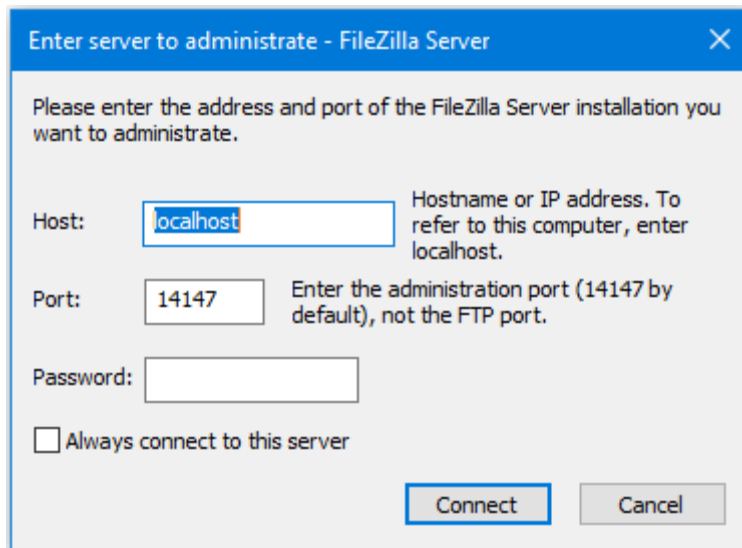
1. a) FTP in a local network: FileZilla server needs to be installed on any computer within the LAN. It can be a corporate server or any other computer that is on at least during business hours. In this case the FTP server will be available via a local IP-address, all the counters will send the data only within the LAN to the local computer that has FTP installed;
2. b) FTP in a wide area network: possible to set up if there is an Internet channel with a dedicated IP-address, then FileZilla server is installed on any computer in the LAN and forwarding is done with an outside IP through network settings. In this case the counters will send the gathered data no matter where they are located. For example, the FTP server can be located in one city with counters being mounted in different cities.

### 3. Installation

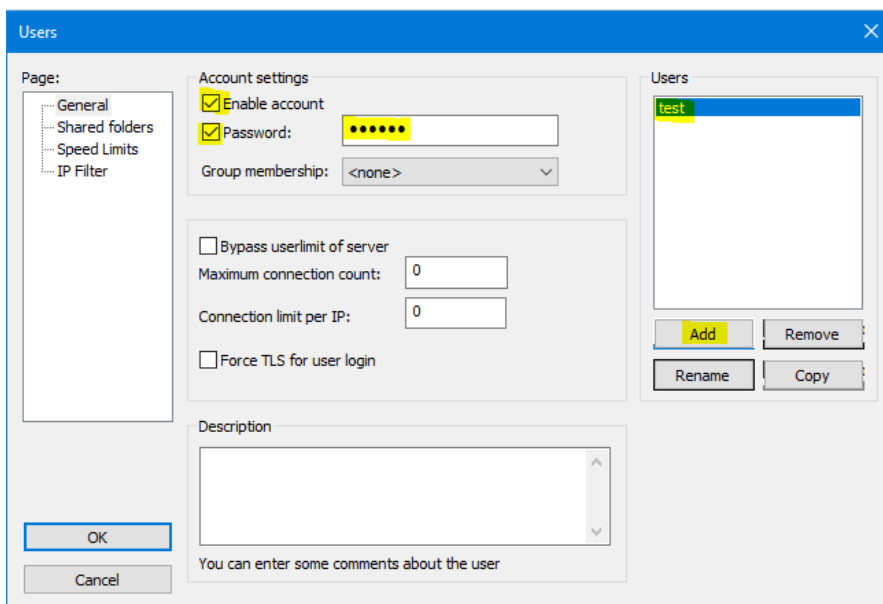
FileZilla Server is installed with default settings.

After it is installed, start FileZilla Server Interface and connect to the service.

Port is 14147 by default, in the box HOST put the computer IP or localhost (127.0.0.1) if the connection is done on the same computer where the FTP server is installed.

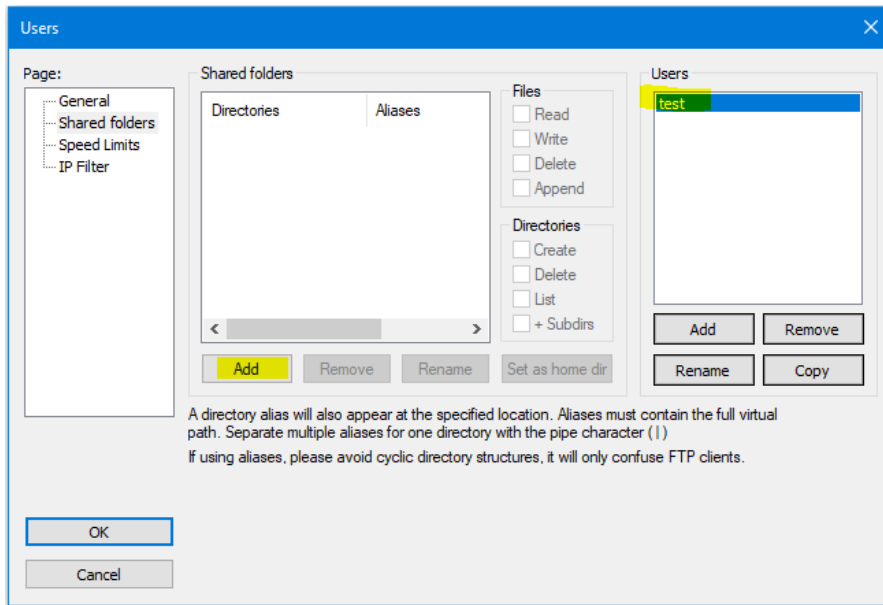


Press **Connect**, and if everything is correct, the interface will open. Click on **Edit**, then **Users**, and **General**.

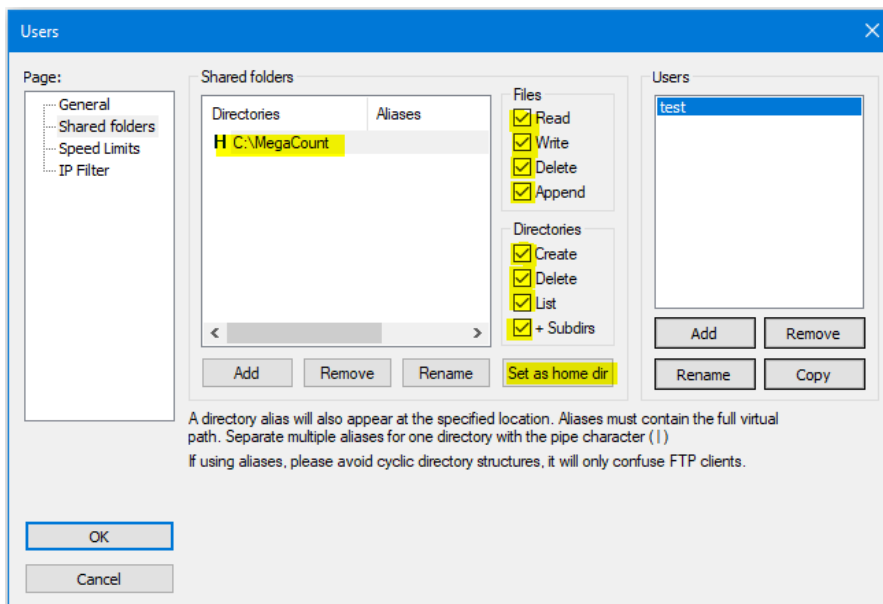


Click **Add** and add a new user (in the example the user is named **test**) with a password.

Choose **Edit-Users-Shared Folders**, then choose the created user on the right.



By clicking **Add**, choose a storage folder for log files.



Check all the boxes and press **Set as home dir**, then confirm by clicking **OK**. Now the initial set up of the server is complete.

## 5. Additional information

There is plenty of information on FileZilla Server installation and on the ways to solve any problems with it in the Internet. Here are just some of the links that can prove to be useful:

[https://www.youtube.com/watch?v=m4y5\\_PHqXtM](https://www.youtube.com/watch?v=m4y5_PHqXtM)

<https://helpdeskgeek.com/networking/how-to-ftp-server-setup/>

<https://www.thewindowsclub.com/setup-filezilla-server-edition-screenshot-tutorial>